



JOHN PSARRAS
S&P CHARTERING



IN PIRAEUS SINCE 1981

Ph:+30 210 4123696 4133931 4115482 Fx:+30 210 4170618
E'Mail: psarras@psarrasj.gr Website:www.psarrasj.gr
(Members of Hellenic Shipbrokers Association - 1984)

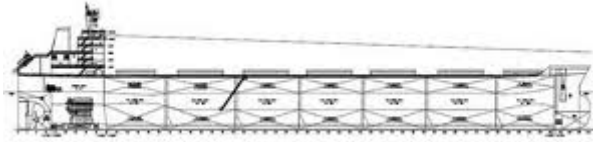
BI-MONTH REPORT

END OCTOBER 2016

The scope of this report is to assist our clients and friends with a quick glance every about 15 days to get a feeling of the market by reading the more interesting sales in view of higher or lower prices of the main vessels types as well as the demolition prevailing prices.

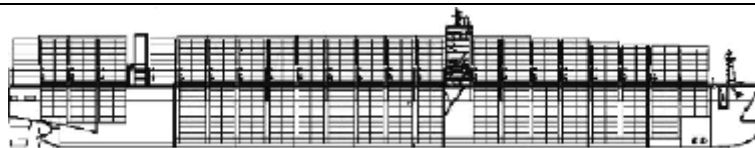


Unus pro omnibus, omnes pro uno



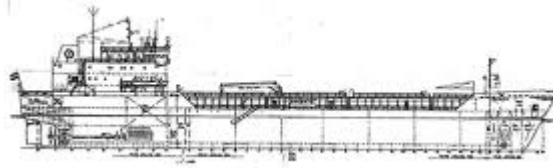
BULK CARRIERS

NAME	DWT	Y.O.B	P.O.B	PRICE
GAIA PEGASUS	229200	2004	JAPAN	12,7 MIL USD TO GREEKS
HANJIN CAPE LAMBERT	179100	2009	S.KOREA	19 MIL USD TO INDIANS
BAROCK	82688	2007	JAPAN	10,8 MIL USD TO UNDISCLOSED
BAVANG	82028	2016	CHINA	19 MIL USD TO UNDISCLOSED
RED QUEEN	76752	2005	JAPAN	6,5 MIL USD TO UNDISCLOSED
PAN UNO	76000	2001	JAPAN	4,6 MIL USD TO CHINESE
GENCO LEADER	73941	1999	JAPAN	3,8 MIL USD TO CHINESE
VINAYAK	58089	2009	CHINA	12 MIL USD TO UNDISCLOSED
NORDIC BUXTEHUDE	57655	2010	CHINA	7,3 MIL USD TO NORWEGIANS
FLAG MERSINIDI	56753	2012	CHINA	8,3 MIL USD TO GREEKS
OCEAN DESTINY	49456	2009	JAPAN	9,5 MIL USD TO CHINESE
MARATHA PREMIER	34900	2016	JAPAN	16,5 MIL USD TO UNDISCLOSED
ALIA R	28400	1997	JAPAN	2,7 MIL USD TO CHINESE
OAKLAND	23622	2000	JAPAN	3,1 MIL USD TO GREEKS



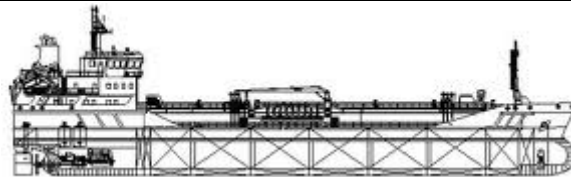
CONTAINER SHIPS

NAME	DWT	TEU	Y.O.B.	P.O.B	PRICE
CONTI SALOME	30573	2127	2007	GERMANY	EN BLOC 8,4 MIL USD TO UNDISCLOSED
CONTI ARABELLA	30562				
NINGPO	22900	1728	1997	POLAND	2,6 MIL USD TO SINGAPOREANS
CONESTE	11193	862	2003	ROMANIA	4,3 MIL USD TO UNDISCLOSED



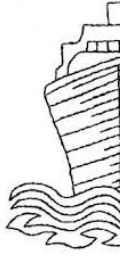
GENERAL CARGO

NAME	DWT	Y.O.B	P.O.B	PRICE
STELLAR PACIFIC	16730	2007	JAPAN	6 MIL USD TO UNDISCLOSED
ORIENTAL PHOENIX	14181	1999	JAPAN	2,3 MIL USD TO CHINESE
HHL NILE HHL AMAZON	12678 12662	2009	CHINA	EN BLOC 16,5 MIL USD TO DUTCH
EVA MARIA MULLER	3722	1998	SLOVAKIA	1,5 MIL USD TO UNDISCLOSED



TANKERS

NAME	DWT	HULL	Y.O.B	P.O.B.	PRICE
DHT CHRIS	309285	DH	2001	S.KOREA	24 MIL USD TO HONGKONG BASED
ASTRO CHORUS	305704	DH	2001	S.KOREA	24,5 MIL USD TO RUSSIANS
ST MARIEN ST JOHANNIS	51218	DH	2007	S.KOREA	EN BOLOC 17.8 MIL USD TO S.KOREAN S
ZHU MIN VICTORIA	16026	DH	1997	JAPAN	5,9 MIL USD TO FAREASTE RN
RED OAK	13000	DH	2009	S.KOREA	11,5 MIL USD TO UNDISCLO SED



DEMOLITION



BANGLADESH

NAME	LDT	DWT	Y.O.B	P.O.B.	PRICE
SNOWDON	21898	170079	1998	S.KOREA	310 USD PER LDT
HIJAU SEMANGAT	3926	10813	1997	GERMANY	270 USD PER LDT
AGIA MARKELLA	9498	71662	1996	JAPAN	301 USD PER LDT



PAKISTAN

NAME	LDT	DWT	Y.O.B	P.O.B.	PRICE
NEW KATERINA	20416	170082	1997	S.KOREA	311 USD PER LDT
THE GUIDE	10296	72326	1996	JAPAN	310 USD PER LDT



CHINA

NAME	LDT	DWT	Y.O.B	P.O.B.	PRICE
ASIA CEMENT NO2	4009	11999	1987	CHINA	205 USD PER LDT
NICHIYU MARU	16367	50741	1989	JAPAN	268 USD PER LDT (LPG)



NAME	LDT	DWT	Y.O.B	P.O.B.	PRICE
JIA XING	9505	22109	1992	YUGOSLAVIA	280 USD PER LDT
RT AEGIR	10500	34015	1997	GERMANY	310 USD PER LDT
YM LOS ANGELES	22002	65123	2006	JAPAN	313 USD PER LDT

Disclaimer

All information stated in this report has been collected from a variety of maritime sources and is presented in good faith and without any guarantee from our part .

J. PSARRAS S+P CHARTERING, shall not accept any responsibility for any errors and/or omissions arising from this report and cannot be held responsible for any action taken and/or losses occurred as a result of the details included in this report.

Recirculation of same is not permitted without the written agreement of the aforementioned company, which is the only entitled one to produce copies of same.